



Kentucky Occupational Safety and Health Surveillance

Terry Bunn, PhD

Kentucky Injury Prevention & Research Center,
Lexington, KY

Kentucky Public Health Association, April 2007



Fundamental Program

- 15 states funded by CDC/NIOSH to conduct surveillance of 19 indicators of occupational injuries and illnesses
- State-specific indicator for occupational motor vehicle collision injuries



Expanded Program

- FACE- Surveillance of fatal occupational injuries
- On-site evaluations of fatalities involving machinery, youths, immigrant workers, highway work zones
- State targets- MVCs (semis, dump trucks and farm vehicles), construction falls



Surveillance Findings

- Worker hospitalization rates in eastern KY
- Increased fatality rates and mortality risks in transp., agric., and const. industries
- High pneumoconiosis rates
- High BLLs in battery manufacturing
- High fatality rates for semi and truck drivers



Occupational Motor Vehicle Collisions

From 2000-2005,

- 6973 fatal occupational motor vehicle collisions (MVCs) nationwide.
- 227 fatal MVCs in Kentucky



19 workers die every day
as a result of a MVC in US.

MVCs:

- 1/4 of all occupational fatalities nationwide
- 1/3 of Kentucky occupational fatalities.



- In 2006, there were 35 worker deaths due to MVCs in Kentucky.

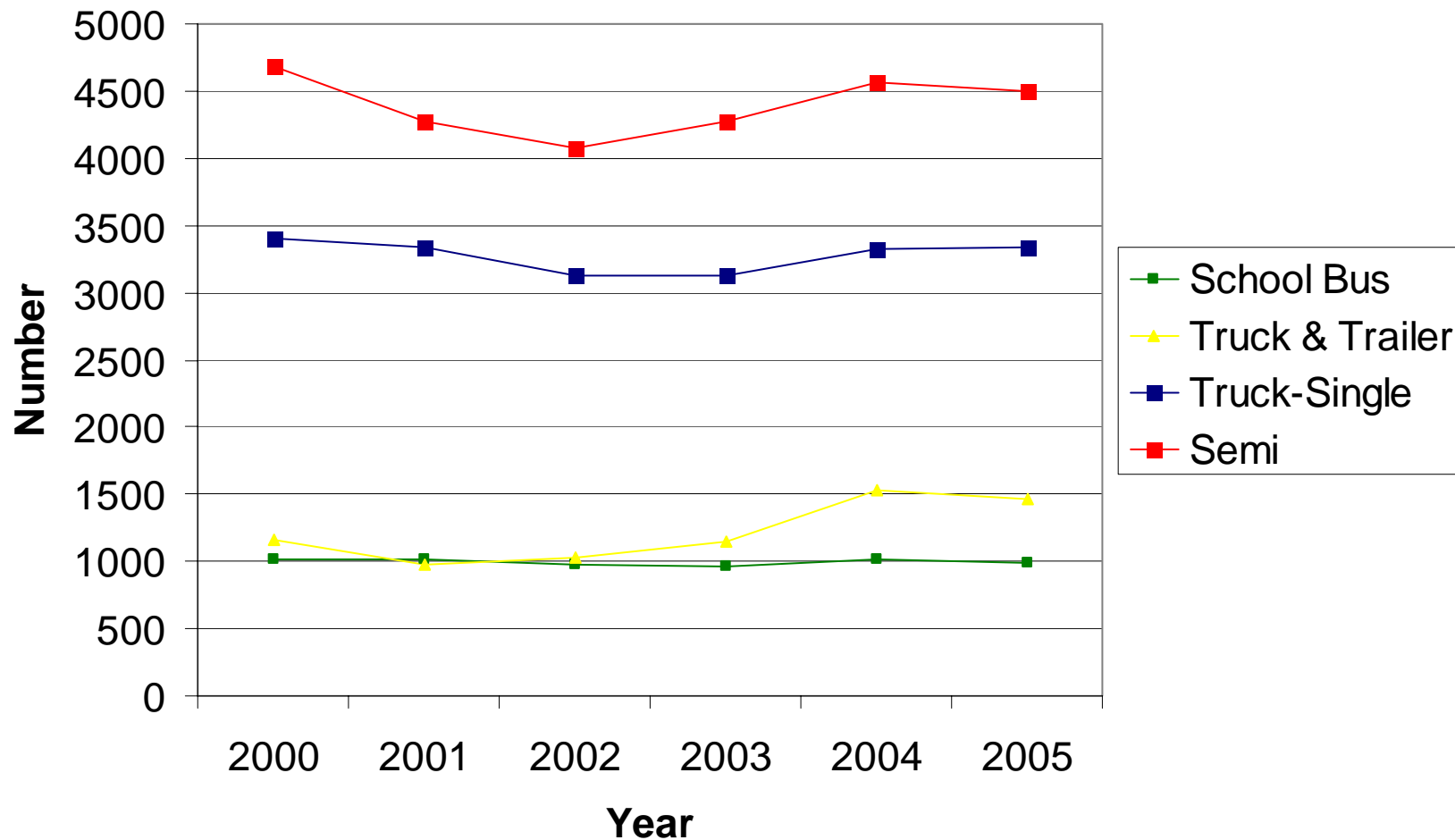


Photo source: Kentucky KIPRC database

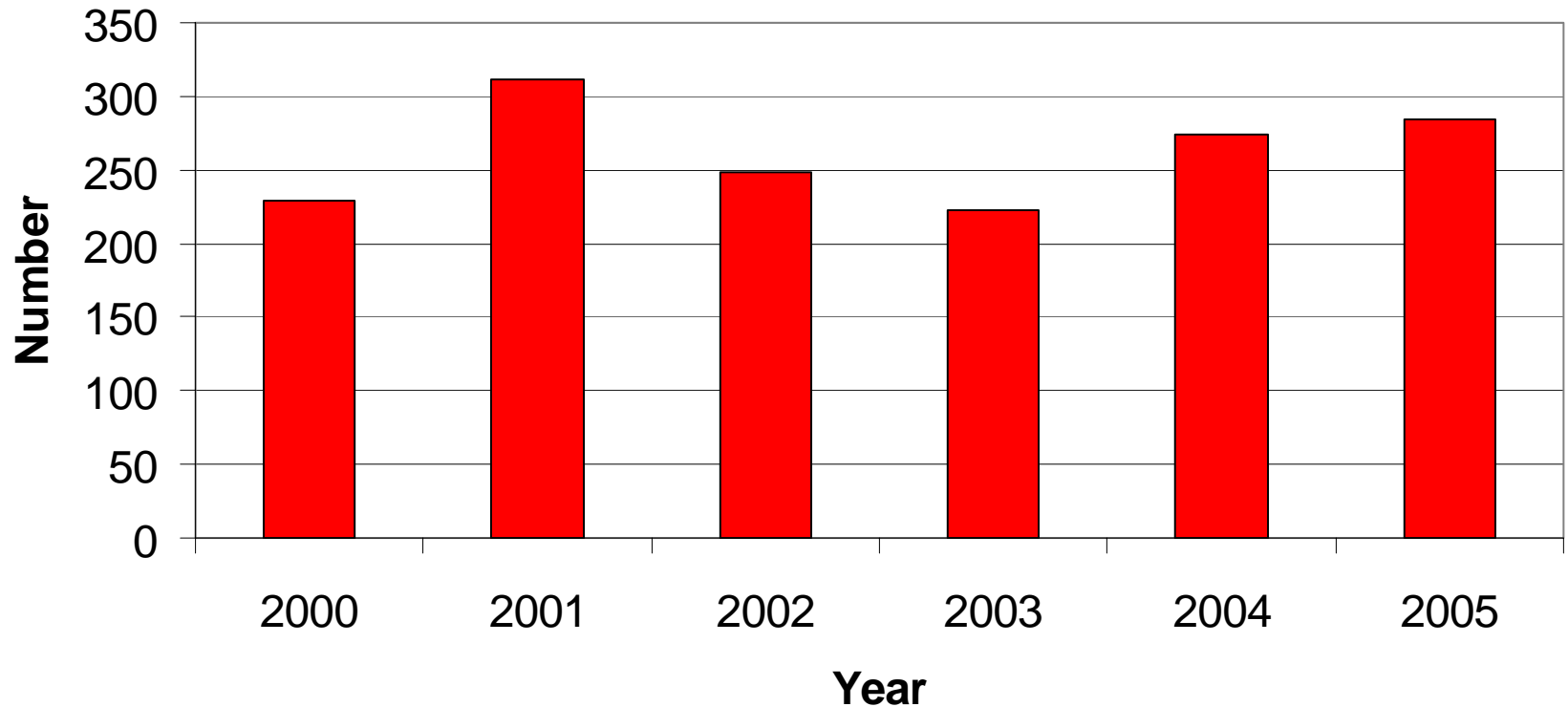
External Cause of Death of Kentucky Workers in 2005

Cause of Death	Number of Fatalities (%)
MVCs	39 (32%)
Struck by..	22 (18%)
Fall	19 (16%)
Ag Machine	10 (8%)
Homicide	10 (8%)

Vehicle Type in Kentucky Occupational MVCs.



Number of Coal Trucks Involved in MVCs, 2000-2005.

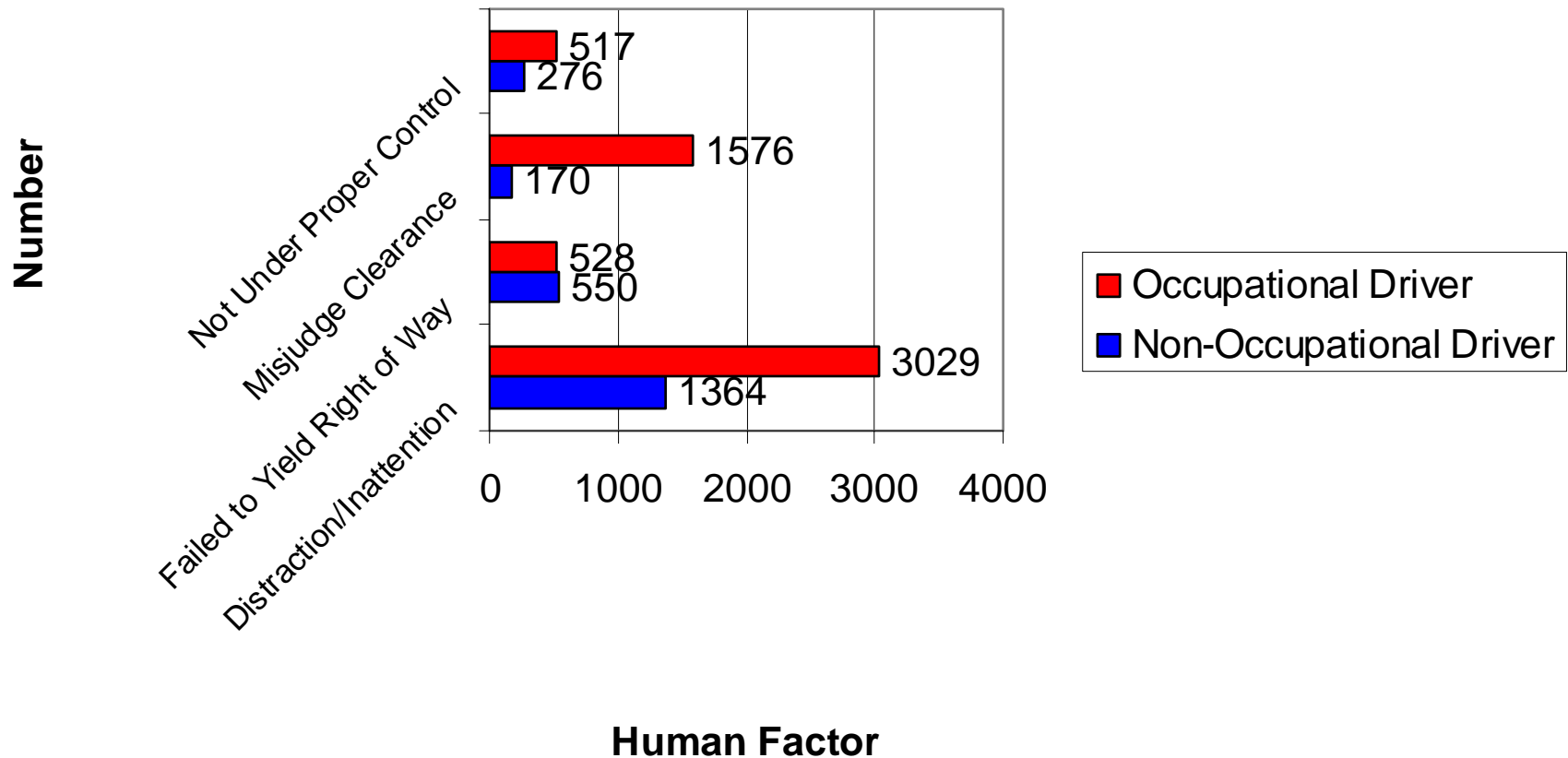




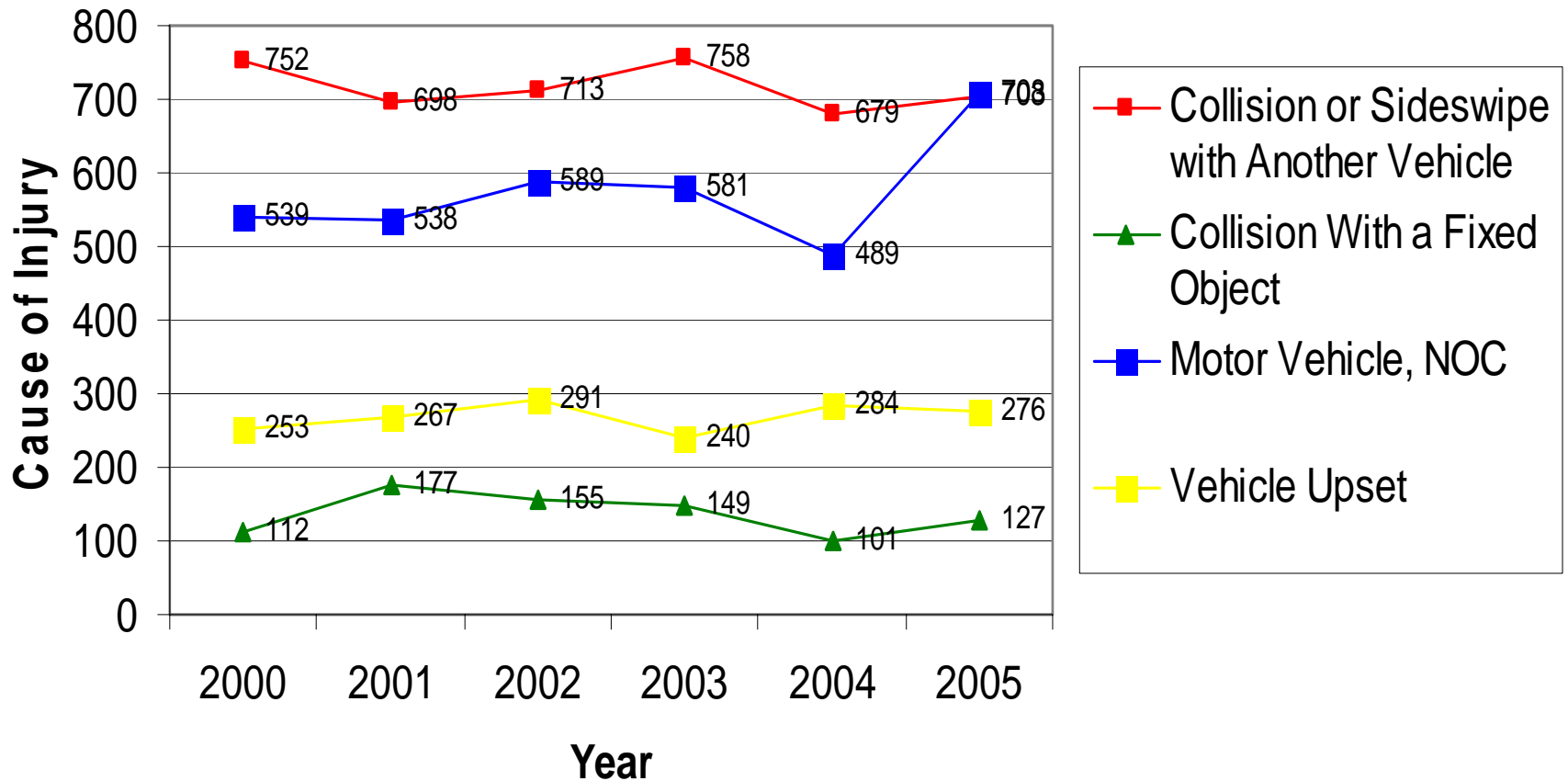
Coal Truck Stats

- 50 People Killed
- 3 Coal Truck Drivers Killed
- Nonuse of Seat Belts- 8.5%

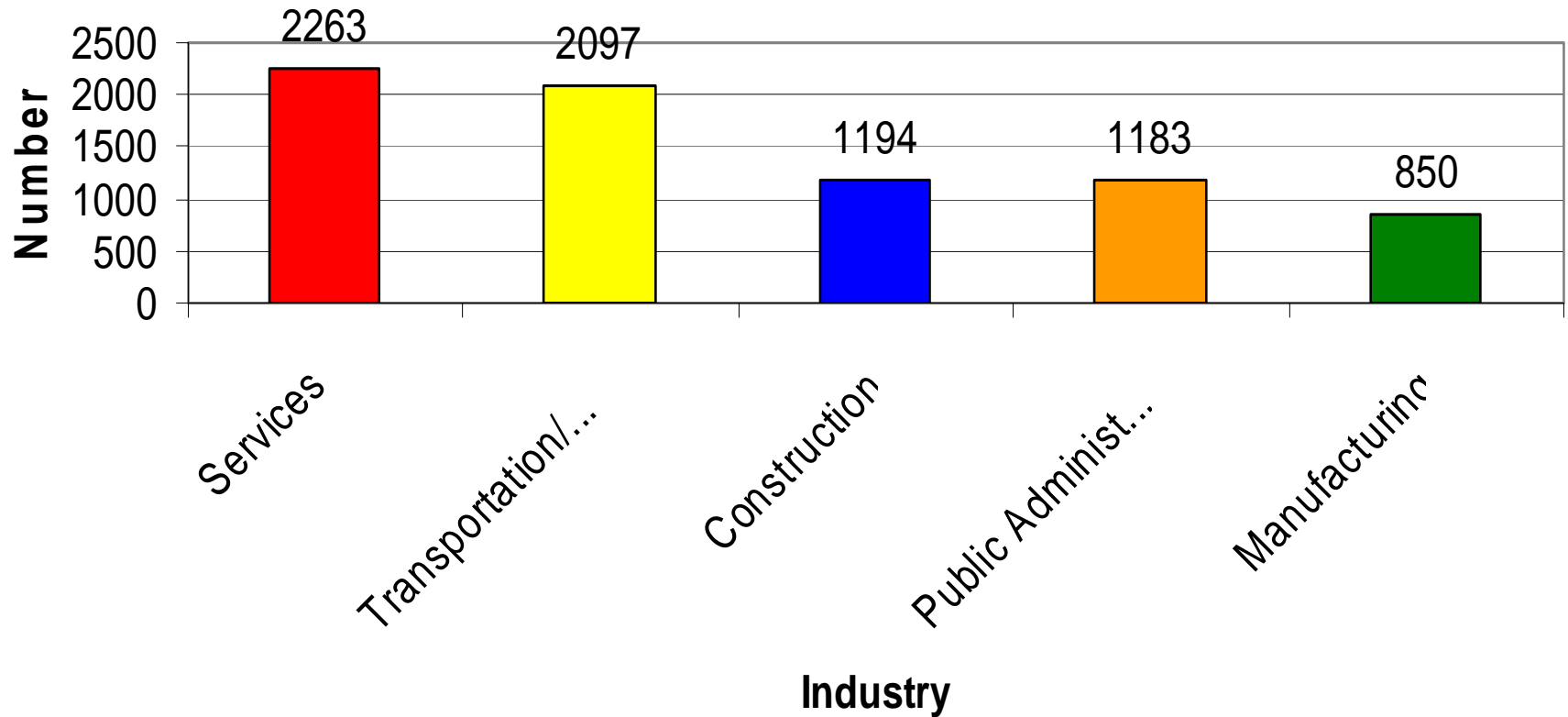
Human Factors Involved in Occupational Motor Vehicle Collisions, 2005.



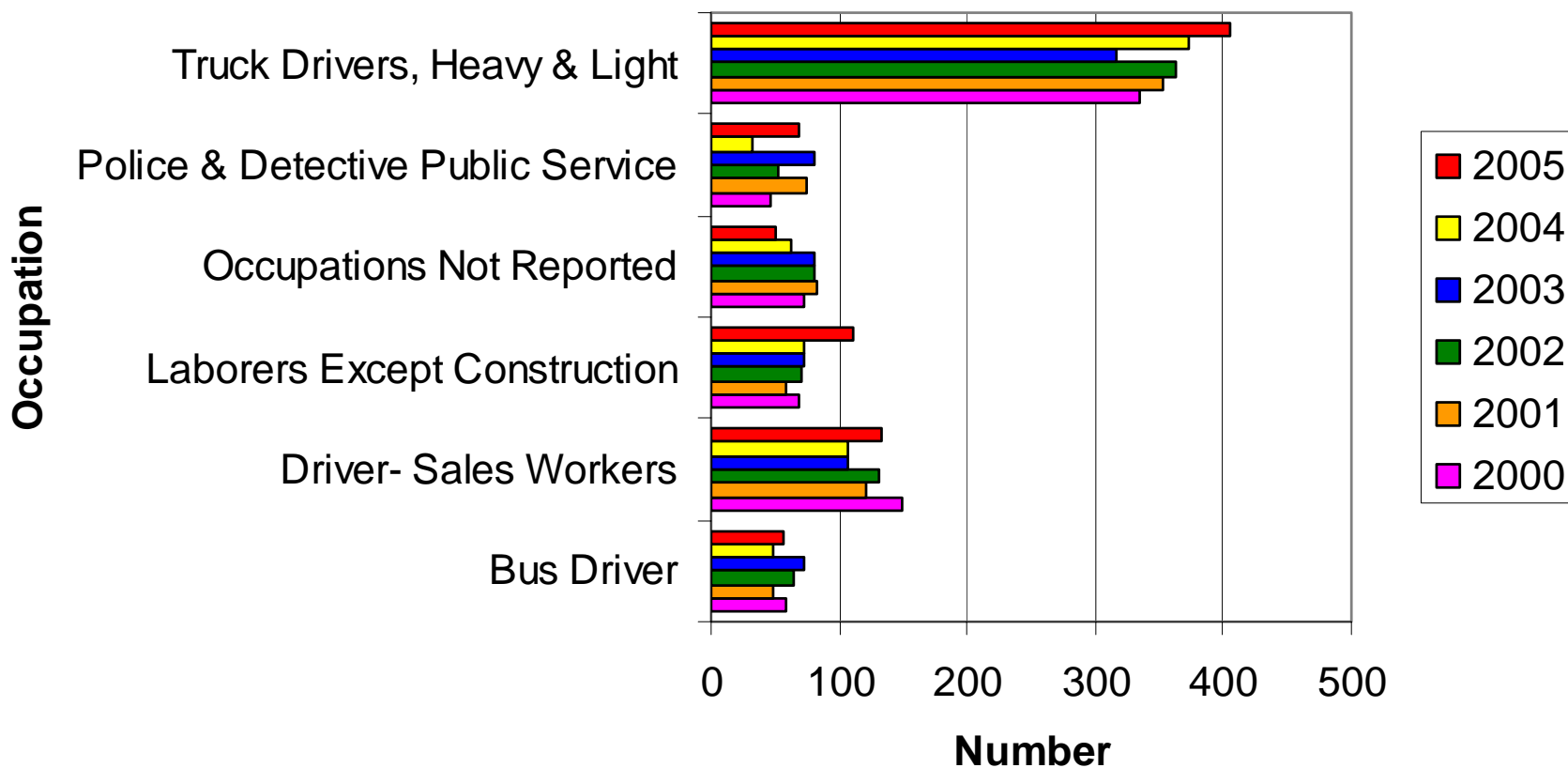
Cause of Injury in Occupational MVCS, 2000-2005. (WC)



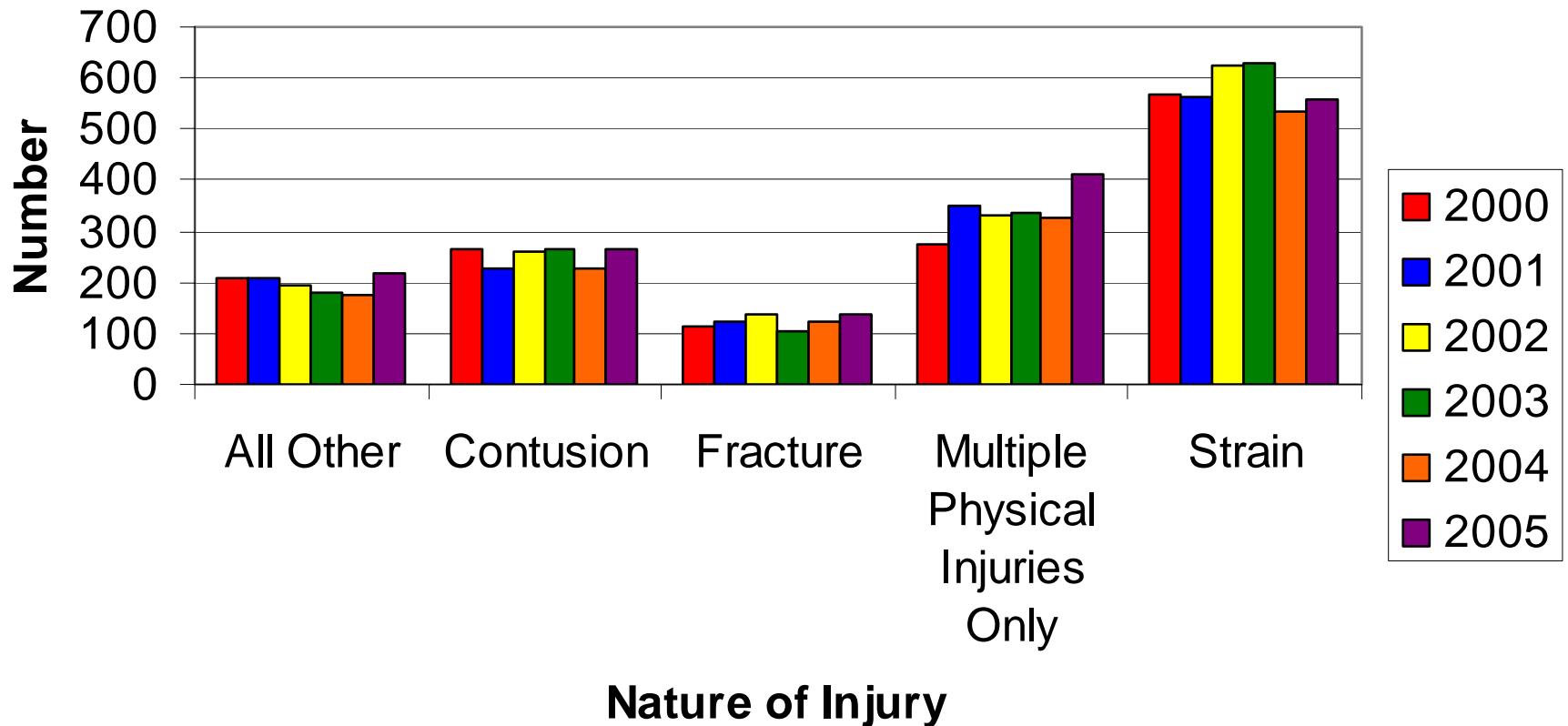
Occupational Motor Vehicle Collision First Reports of Injury and Claims Filed With Workers' Claims by Industry, 2000-2005.



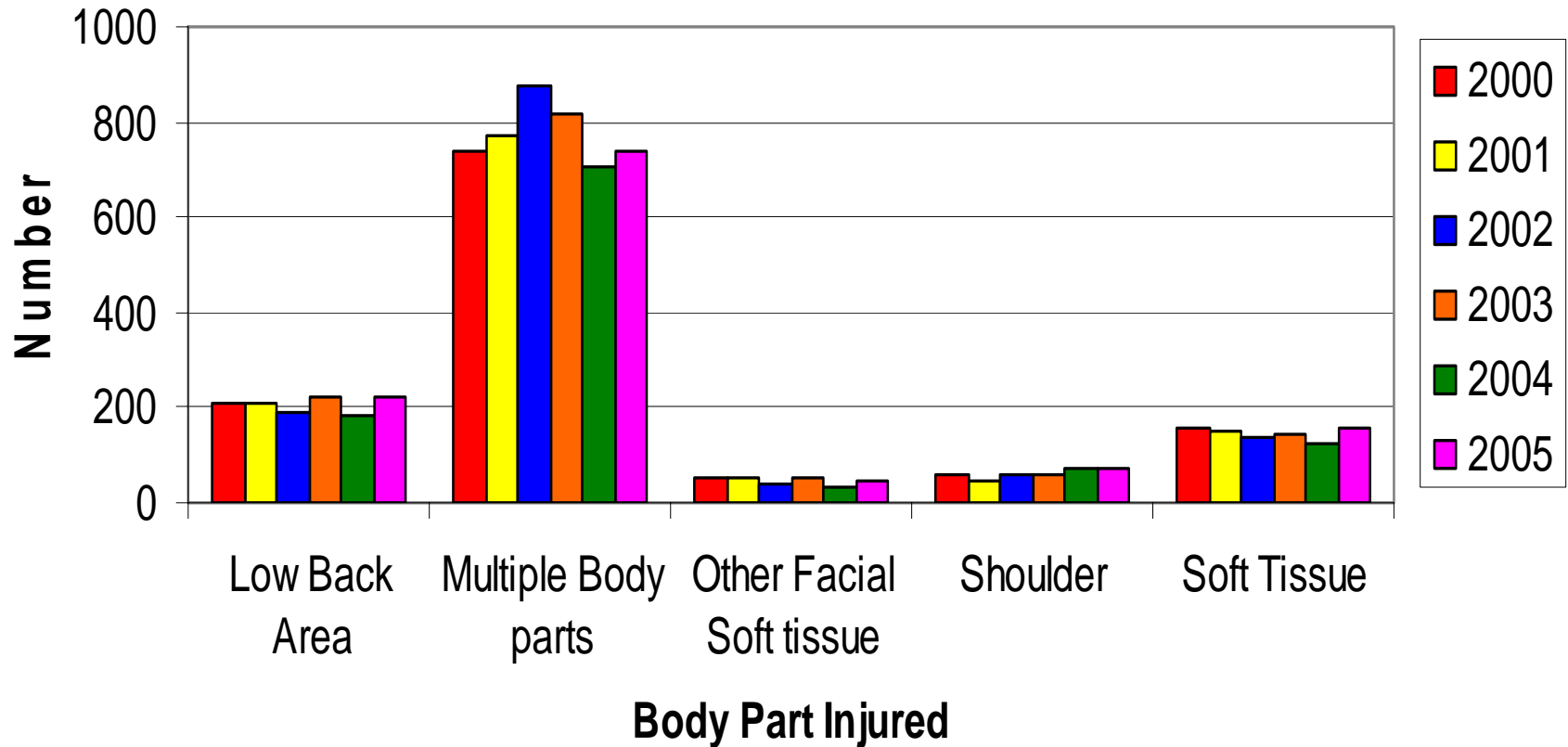
Occupational Motor Vehicle Collision First Reports of Injury and Claims Filed With Workers' Claims by Occupation, 2000-2005.



Occupational Motor Vehicle Collision First Reports of Injury and Claims Filed With Workers Claims by Nature of Injury, 2000-2005.



Common Body Parts Injured in First Reports of Injury and Claims Filed with the Office of Workers' Claims, 2000-2005.




Conclusions

- Semi truck drivers and coal truck drivers are the populations at risk for an occupational MVC injury.
- The most common cause of injury is due to collisions and sideswipes with other vehicles.



Conclusions (cont'd)

- Driver distraction/inattention and misjudging clearance are the major contributing factors for a work-related MVC in Kentucky.

- 
- Further research is needed to further examine the relevant risk factors for Kentucky occupational MVCs so that effective prevention strategies can be developed.

How is this data utilized?

- Reports, fatality evaluations, and Hazard Alerts can be used to supplement training programs for companies who employ drivers (e.g. recognition of fatigue) and governmental agencies.